

JANUARY 2021

NOURISH NEWS



Updates for the parents of babies in the Nourish Study

New Year, New Nourish Updates

Greetings from the Nourish Study Team!

Happy 2021! We hope that you and your babies are peacefully and safely adjusting to life at home. We enjoyed getting to know you and watching your babies grow in the NICU. Now we want to update you on a few study successes and to fill you in on what is next to come!



OVERVIEW:

- 2021 Greetings
- Study Progress
- What's Next?
- Staff Updates

Contact us with any questions or updates!

We are looking for pictures of your babies settling in at home to add to our website!

Website:
nourish.brighamandwomens.org

Email:
nourish@bwh.harvard.edu

Phone: 617-652-0020

Study Updates

our entire team wants to thank you so much for your participation thus far. We finally resumed enrollment after a few months' long COVID-19 related pause. We are happy to be back and hope that you enjoy these pictures of adorable Nourish babies undergoing bioimpedance measures with the team.

What's Next

Upcoming Follow-Up Visits

Question: Does the Nourish Study continue after discharge?

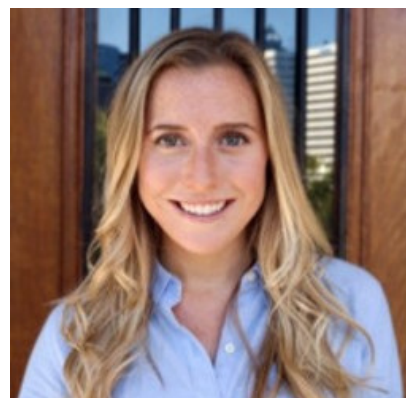
Answer: Yes! If you visit the Brigham & Women's NICU Follow-up Clinic for a regular appointment when your baby is 4 and 12 months corrected age, you will have a chance to touch base with our study coordinator Laurie! She will check in to see how things are going with you and baby. At this time, you may also fill out a study questionnaire, or you can fill it out at home if you prefer.

We look forward to seeing you soon !



Team Transitions

Emma Davitt was the Research Assistant for "Pre-Nourish" (our pilot study) and also helped to launch Nourish. Emma recently began a 1-year accelerated Nursing Program in Seattle, Washington and plans to become a NICU nurse! Her interest in nursing developed through interacting with babies and families in our NICU studies. Emma's journey shows that our research doesn't just help improve the care of NICU babies, it also has a positive impact on the next generation of NICU professionals!



Staff Spotlight : Laurie Foster, MEd, CLC



I am originally from Boston and moved back to the area a year and a half ago, after 24 years in Minneapolis. I am thrilled to be involved in research in the NICU and to be a part of the Nourish Study team!

I am trained as a child life specialist, parent educator and lactation counselor. I am lucky enough to have spent decades working with mothers and babies both in and out of hospital settings. I never tire of watching babies grow, and I look forward to seeing you and your babies for the follow up portions of the Nourish Study!